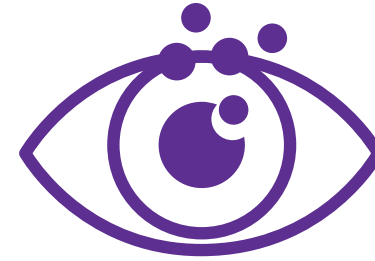


# Understanding Meibomian Gland Dysfunction

## What is Meibomian Gland Dysfunction (MGD)?

MGD is a condition wherein the glands that produce the oily part of the tear film become dysfunctional and do not produce adequate or good quality meibum. This leads to tear film instability and dry eye.

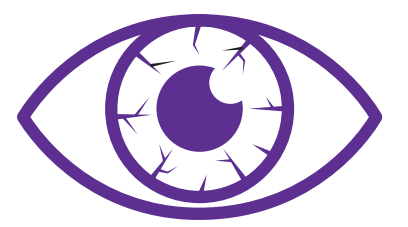
MGD/evaporative dry eye symptoms can include:



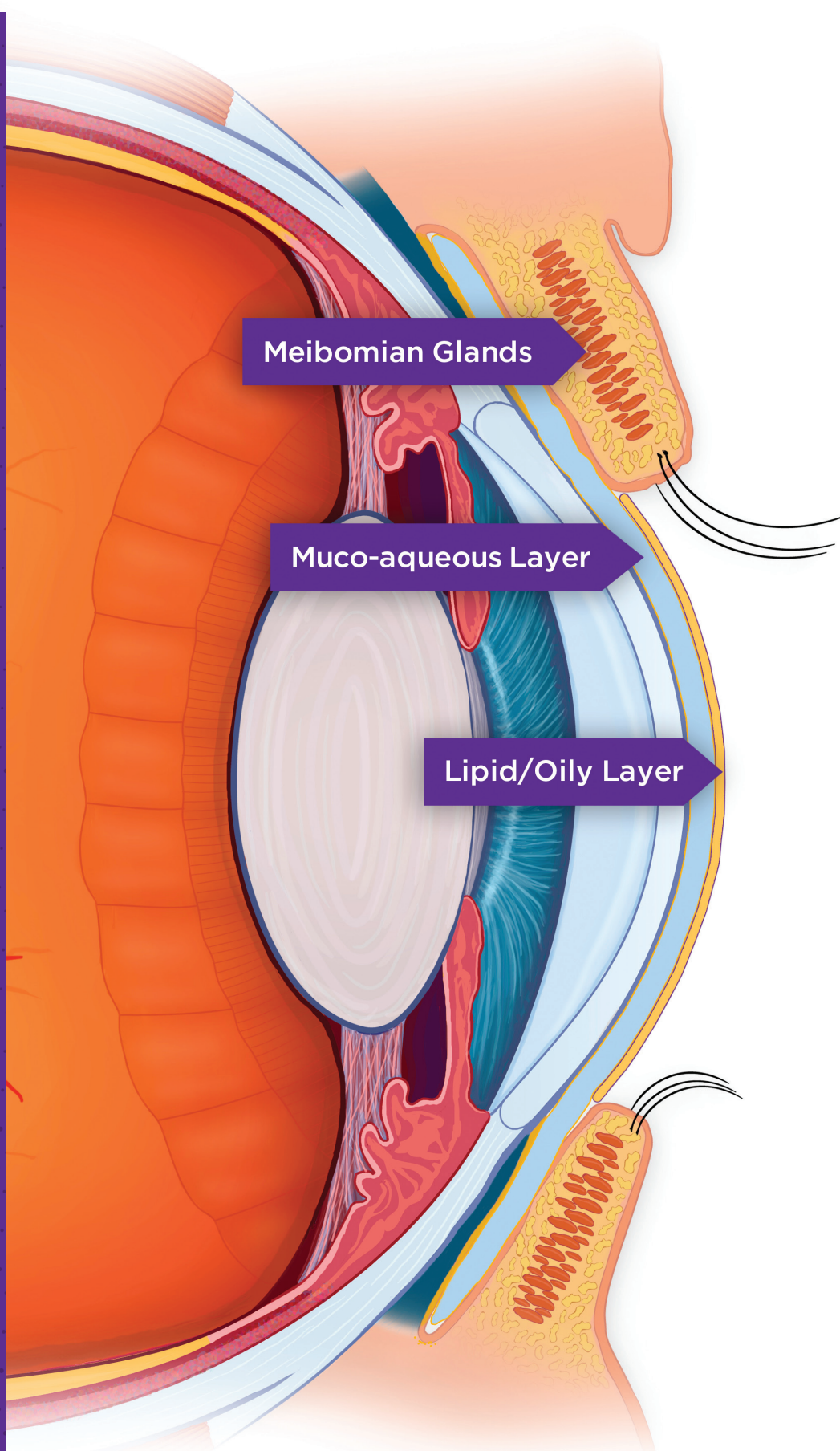
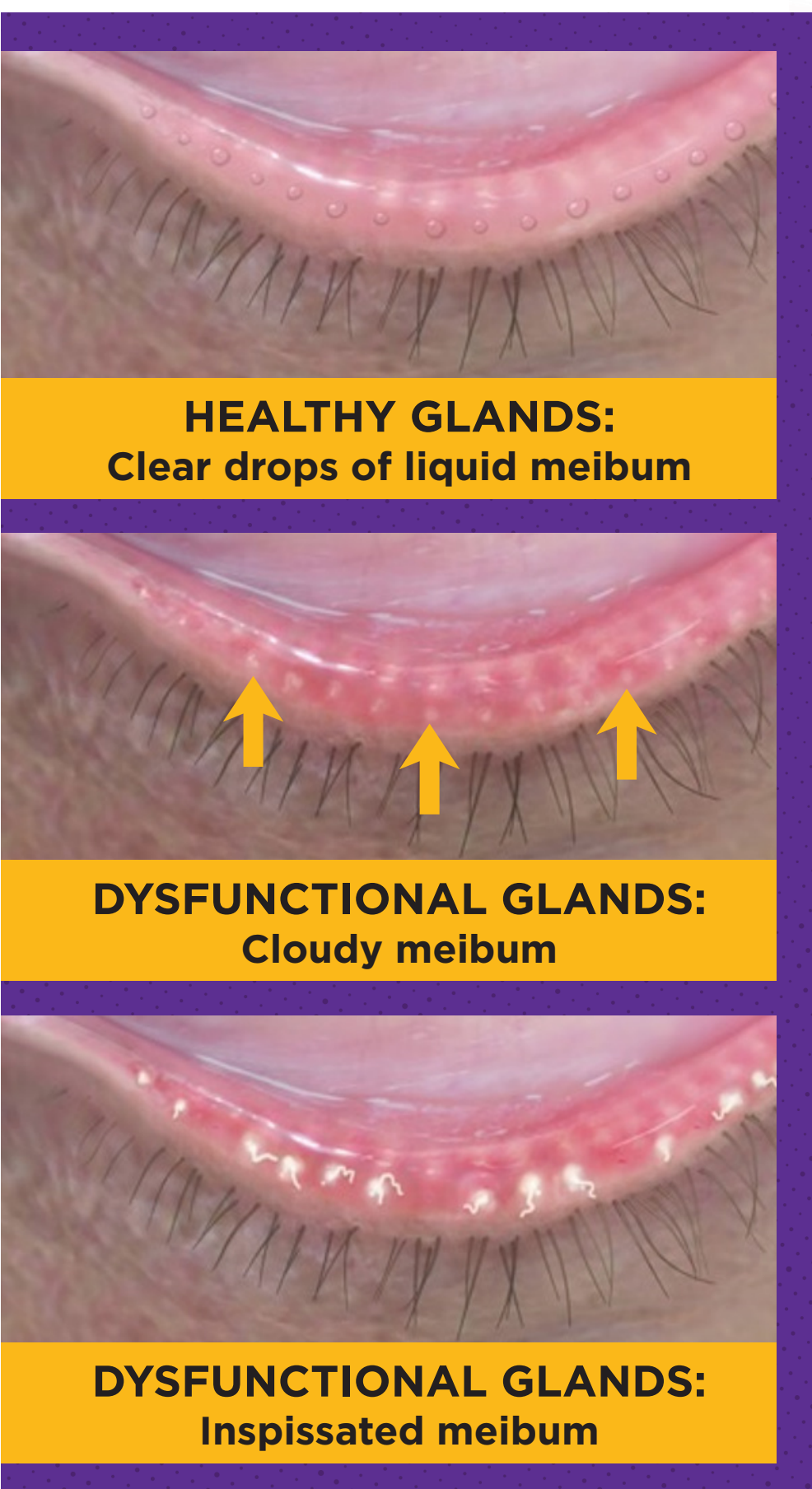
Dryness



Blurred Vision



Irritation



**iLUX**  
TREATMENT SYSTEM



## REAL DRY EYE RELIEF CAN BE YOURS

Ask your doctor today about treatment with the iLUX<sup>®</sup> MGD Treatment System.

### Important Information for iLUX<sup>®</sup> Device:

The iLUX<sup>®</sup> Device is used to heat and compress glands in the eyelids of adult patients with a specific type of dry eye, called Meibomian Gland Dysfunction (MGD), also known as evaporative dry eye.

Potential side effects may include eyelid/eye pain requiring stopping the treatment procedure, eyelid/eye irritation or inflammation, temporary reddening of the skin, and other eye symptoms (burning, stinging, tearing, itching, discharge, redness, feeling like there is something in the eye, changes in your vision, sensitivity to light).

Ask your eye care professional for a complete list of safety information for the iLUX<sup>®</sup> Device.